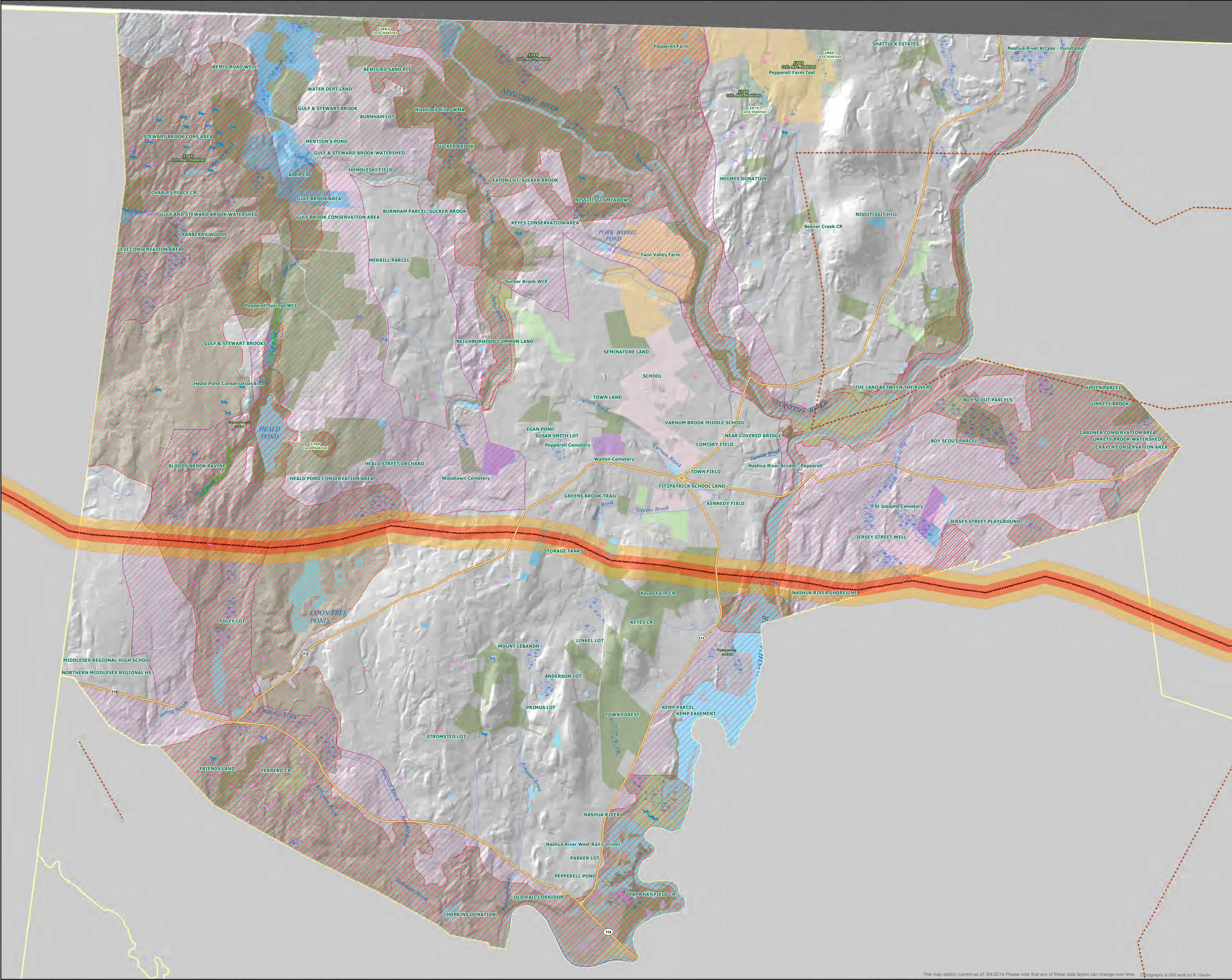


Natural Resources Potentially Affected by TGP/Kinder Morgan Gas Pipeline in PEPPERELL, Mass.



Legend

- NHESP Potential Vernal Pools
- NHESP Certified Vernal Pools
- Approx. KM/TGP Pipeline Route*
- Pipeline +/- 200 ft.
- Pipeline +/- 500 ft.
- NHESP Natural Communities
- Area of Critical Environmental Concern
- NHESP Priority Habitats of Rare Species
- NHESP Estimated Habitats of Rare Wildlife

Open Space by Primary Purpose

- Agriculture
- Conservation
- Recreation
- Recreation and Conservation
- Flood Control
- Habitat Protection
- Historical / Cultural
- Scenic (Official Designation Only)
- Underwater Site
- Water Supply Protection
- Other
- Unknown
- BioMap2 Core Habitat
- BioMap2 Critical Natural Landscape

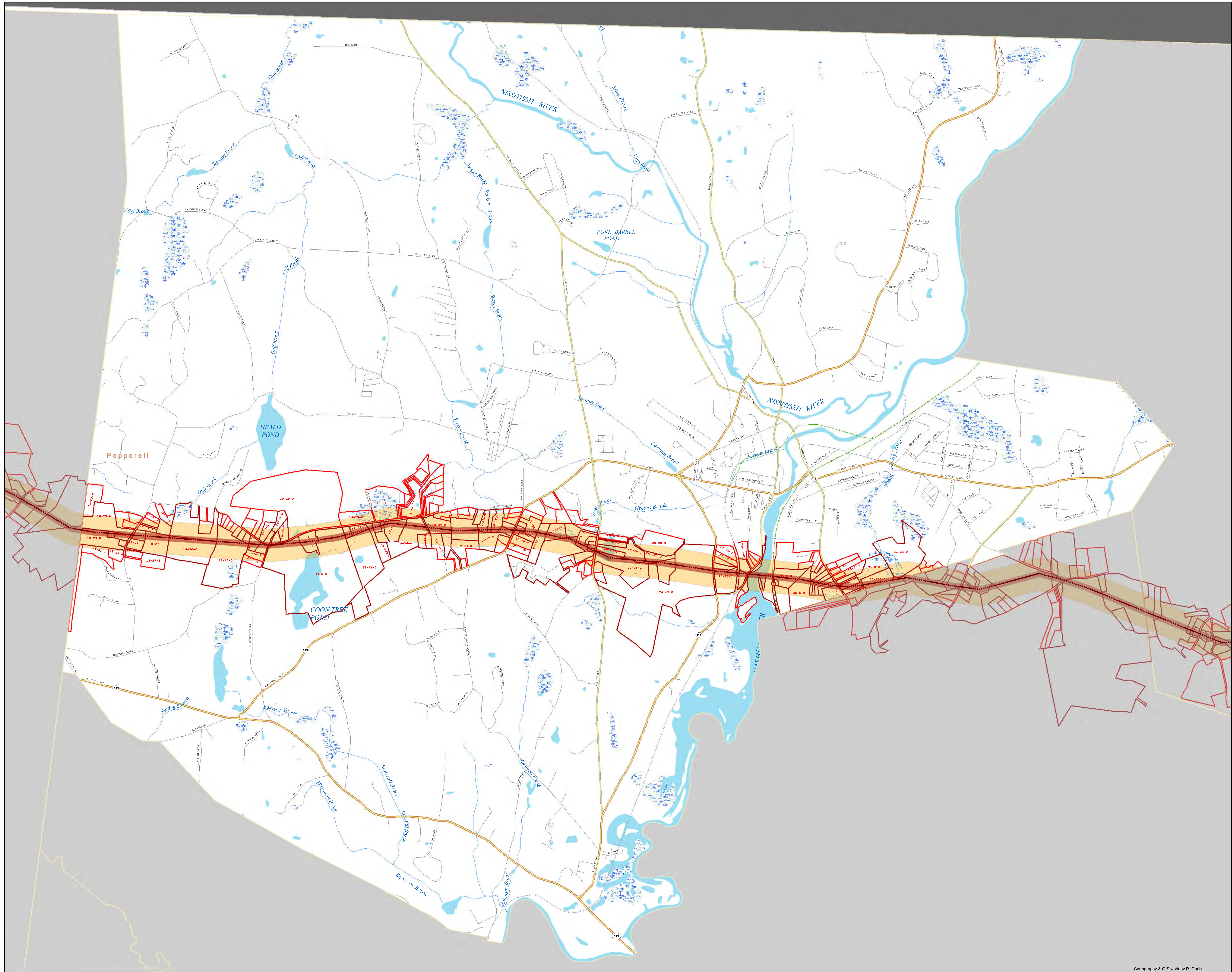
DISCLAIMER: The accuracy of the pipeline depicted on this map cannot be established without better data from Kinder Morgan.

Data Sources:
 *Pipeline path and derived swaths: Kinder Morgan County-Scale maps marked "Preliminary Use Only", as made public by various municipalities. PDF images were converted to GIS file formats.
 Other data layers: Commonwealth of Massachusetts (MassGIS) as developed by various agencies and municipalities. NHESP = The Natural Heritage & Endangered Species Program.

Detailed descriptions of most of the data layers included on this map are available online at:
<http://www.mass.gov/inf/research-and-tech/it-serv-and-support/application-serv/office-of-geographic-information-massgis/datalayers/layerlist.html>

1:12,000

Parcels Potentially Affected by TGP/Kinder Morgan Gas Pipeline in PEPPERELL, Mass,

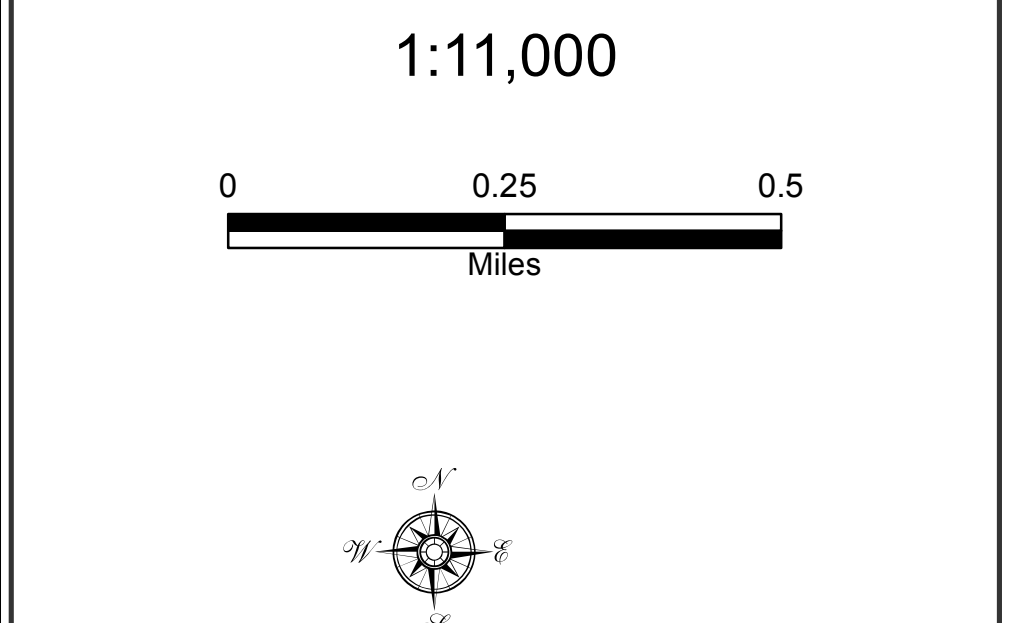


- Legend**
- Approx. KM/TGP Pipeline Route*
 - █ Crossed by pipeline +/- 100 ft.
 - █ Crossed by pipeline +/- 500 ft.
 - █ Pipeline +/- 100 ft.
 - █ Pipeline +/- 1000 ft.
- Railroads - Type of Service**
- Active Rail Service
 - Right-of-way used for Hiking and Biking
 - Abandoned Service ROW in Public Interest
 - Abandoned or Out of Service
 - Unknown

DISCLAIMER: The accuracy of the pipeline depicted on this map cannot be established without better data from Kinder Morgan.

Parcels labeled with Assessor's map & lot number.

Data Sources:
 Pipeline path and derived swaths: Kinder Morgan County-Scale maps marked "Preliminary Use Only," as made public by various municipalities. PDF images were converted to GIS file formats.
 Other data layers: Commonwealth of Massachusetts (MassGIS) as developed by various agencies and municipalities.



Water Resources Potentially Affected by TGP/Kinder Morgan Gas Pipeline in PEPPERELL, Mass.



Legend

- Major Watersheds
- Fishing/Boating Access Site
- Public Water Supplies**
 - Community Groundwater Source
 - Surface Water Intake
 - Emergency Surface Water Intake
 - Non-Community Groundwater Source
 - Potential Vernal Pools
 - Certified Vernal Pools
- Existing Gas & Electric Transmission Lines
- Approx. KM/TGP Pipeline Route*
- Pipeline +/- 200 ft.
- Pipeline +/- 500 ft.
- Marsh
- Wooded Swamp
- Perennial Stream
- Intermittent Stream
- Ditch/Canal
- Aqueduct
- Dam
- Pond, Lake, Ocean
- Drinking Water Reservoir
- Inundated Area
- High Yield Aquifer
- Medium Yield Aquifer
- Interim Wellhead Protection Area (IWPA)
- Approved Wellhead Protection Area (Zone II)
- Surface Water Supply Protection**
 - Zone A
 - Zone B
 - Zone C
 - Living Waters Core Habitat
 - Living Waters Critical Supporting Watershed
 - High Yield Aquifer
 - Medium Yield Aquifer
- Outstanding Resource Waters (2007)**
 - Public Water Supply Watershed
 - Area of Critical Environmental Concern
 - Scenic/Protected River
 - Wildlife Refuge
 - Protected Open Space

Data Sources:
*Pipeline path and derived swaths: Kinder Morgan County-Scale maps marked "Preliminary Use Only", as made public by various municipalities. PDF images were converted to GIS file formats.
Other data layers: Commonwealth of Massachusetts (MassGIS) as developed by various agencies and municipalities.
Detailed descriptions of most of the data layers included on this map are available online at: <http://www.mass.gov/infresearch-and-tech/inf-serv-and-support/application-serv/office-of-geographic-information-massgis/datalayers/layerlist.html>

DISCLAIMER: The accuracy of the pipeline depicted on this map cannot be established without better data from Kinder Morgan.

1:12,000

0 0.25 0.5 Miles